

BATTERY IDENTIFICATION DEVICES

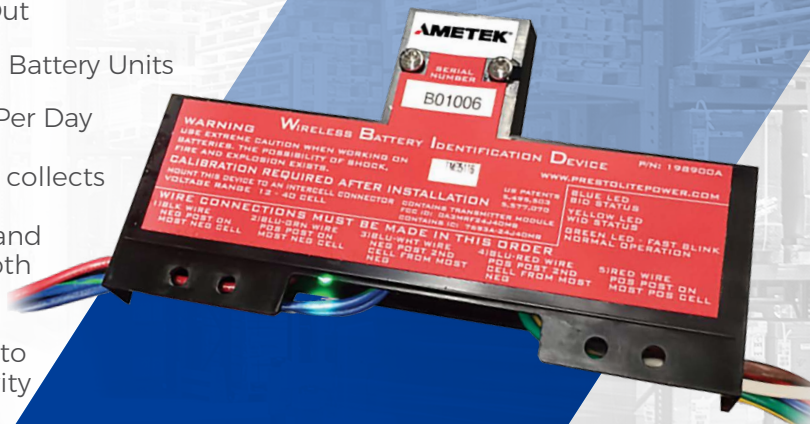
BID AND WBID

Our Battery Identification Device (BID) provides the charger with the ID number of the battery and its data. This data includes the kind of battery, its Ah capacity, how many cells it has and the start rate. Throughout the charge, it will provide the optimum temperature compensated charge profile for that battery.

The Wireless Battery Identification Device (WBID) is the most advanced battery mounted monitoring device, it's compatible with AMETEK chargers or as a standalone device and an essential tool for opportunity and fast charge applications. The WBID takes a sample of data every 100 milliseconds and saves the data for up to seven years.:

- Average and Minimum/Maximum Temperature
- Ampere Hours In/Out
- Average Equivalent Battery Units
- Average Connects Per Day

The data the device collects is transferred to our InsightPC software and can be viewed in both graph and tabular format. Managers can utilize the data to maximize productivity in shipments and pallets moved, protect assets from excessive maintenance costs and help lengthen battery life.



AMETEK®

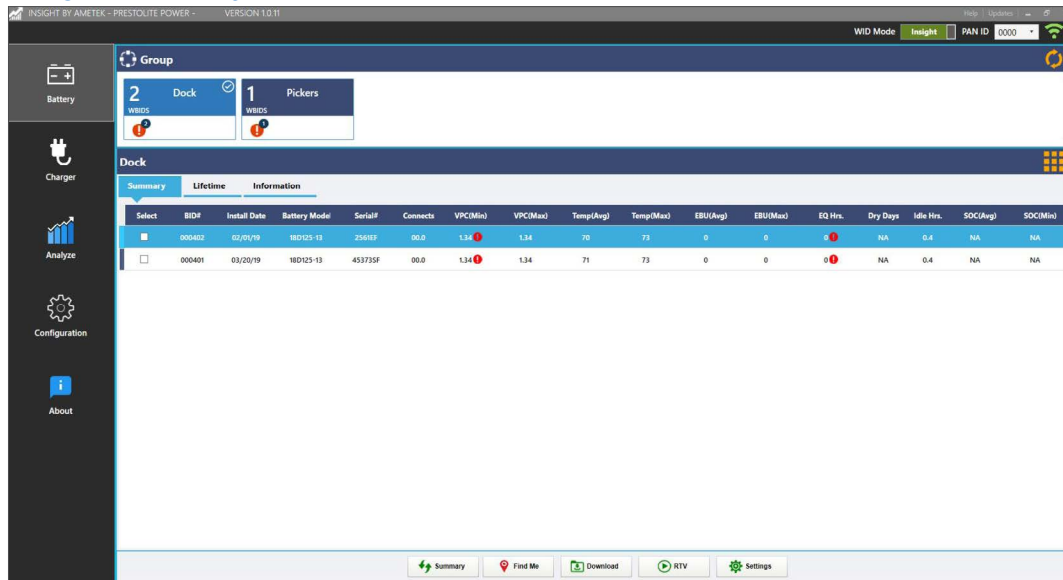
PRESTOLITE POWER

**CHARGING THE MOTIVE POWER
INDUSTRY FOR OVER 100 YEARS**

WBID Monitoring

The 30-Day overview monitors opportunity and fast charge key metrics. In addition to the overview, InsightPC provides live streaming that allows real-time monitoring of data points, like the volts per cell, current, temperature and estimated state of charge.

InsightPC 30-Day Overview



Average Daily Connects help managers enforce charging protocol to ensure lift truck productivity. Equalization Hours enables managers to protect battery health by showing weekly equalization has been completed.

Battery Analyzer



Set up custom dashboards to monitor specific data points, such as the minimum, maximum and average temperatures, to help protect battery health.

The Battery Analyzer allows customizable monitoring of data points, such as connects per day to meet charging protocol. It also provides ampere hours in and out to comply with OEM battery warranty.

WORLD HEADQUARTERS

66 Industry Court
Suite F
Troy, OH 45373
Toll Free: +1-800-367-2002
Fax: +1-800-654-4024

WEBSITE

www.prestolitepower.com

EMAIL

prestolite.sales@ametek.com



AMETEK®

PRESTOLITE POWER

REV 01/2026