

Updating Existing WBIDs in The Field to Cloud-Ready Firmware

Materials Required

- WID2- New Wireless Identification Device
- PCInsight Software Installed on Windows PC
- Firmware Revision (sent from AMETEK Prestolite Power team upon request)

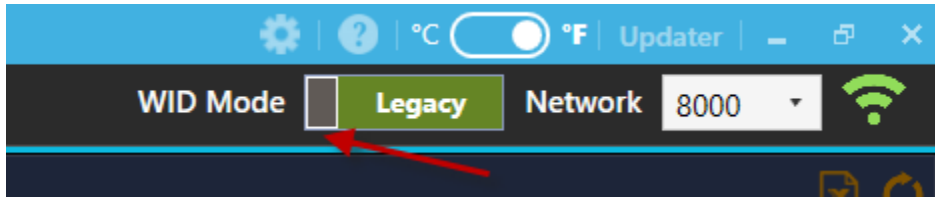
Note: Do not have Gateways plugged in until after the update

Setup for Wireless Updates of Existing Sites

Network Fix

Existing test sites require a network fix using a small .hex file. This will allow the WBID to update to a different network.

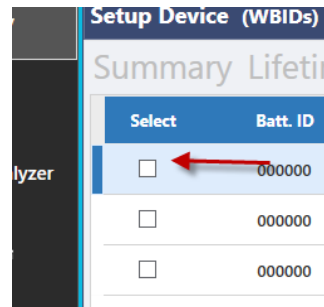
1. Open PCInsight
2. Connect WID2
3. Click on Battery Tab
4. Go to the Legacy Screen, to network 8000



5. The WBIDs will populate the list

Select	Batt. ID	Install Date	Batt. Model	Batt. SN	WBID SN	Calibrated	Calls	Amp Hours	Avg. Days	Network	Firmware	Actions
<input type="checkbox"/>	000000	Setup Device	NA	NA	1B4232	✗	NA	0	0	0169	03.23.00	[Location] [Settings] [Play] [Refresh] [Download]
<input type="checkbox"/>	000000	Setup Device	NA	NA	1B4868	✗	NA	0	0	0880	03.23.00	[Location] [Settings] [Play] [Refresh] [Download]
<input type="checkbox"/>	000000	Setup Device	NA	NA	1B4C1A	✗	NA	0	0	6748	03.23.00	[Location] [Settings] [Play] [Refresh] [Download]

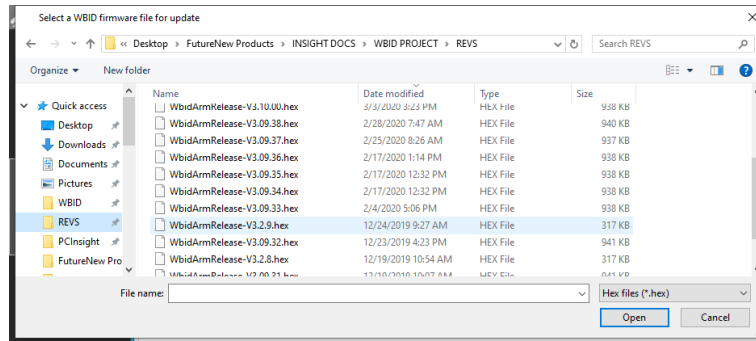
6. Check the desired WBIDs to update



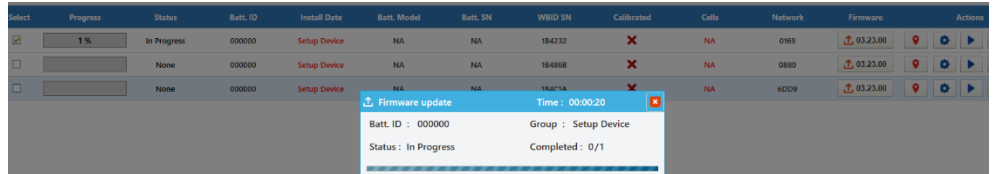
7. Click Update on the bottom of the screen

8. Select the file to update. The first one should be 3.2.9

9. A Browser window will open after clicking OK

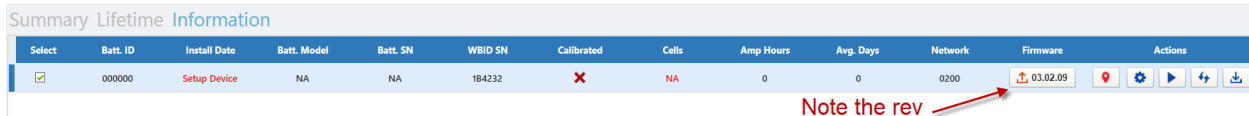


10. The WBID will grey out from this list when complete. The updates will take 5-8 minutes with good reception



RELEASE CODE INSTALLATION

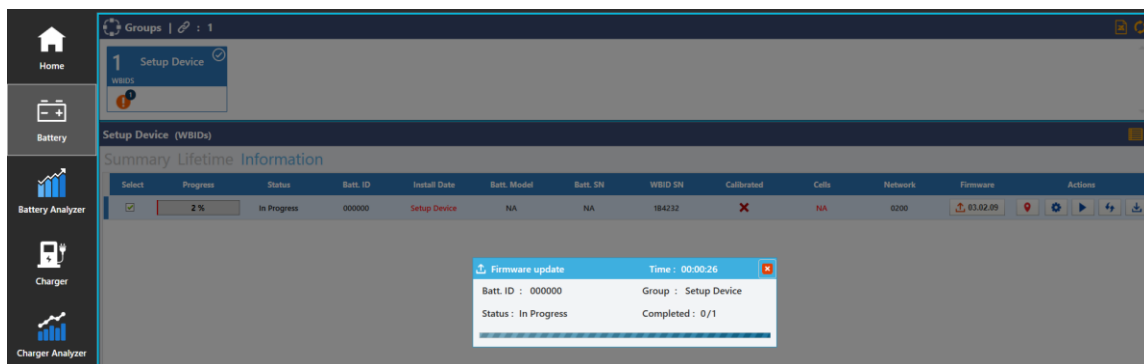
11. Hit the refresh button in the top right and let the WBIDs populate the list



12. Select the ones to update to the latest code.

13. Click update and choose 3.23.02 (or latest)

14. This is a larger file and will take a while to update (10-15 mins each)



15. When completed, the WBIDs will be back on the Insight Screen and on Network 0000. Unplug the WID2 and plug in the Gateway

16. Go back to 0000 on the Insight screen and make sure your WBIDs have all populated and show

the correct firmware  (or later)